

Rivet Bush Wall Chart

ROUND Pattern

Thread Size	Hole Diameter (mm)	Spigot Diameter (max)	Body Diameter (mm)	Body Height (mm)
M3	5.54	5.54	7.92	3.17
M3.5	6.73	6.73	9.52	3.17
M4	6.73	6.73	9.52	3.17
M5	7.92	7.92	11.1	3.81
M6	9.52	9.52	12.7	5.08
M8	12.7	12.7	15.87	6.35
M10	15.87	15.87	19.05	7.62
M12	19.05	19.05	25.4	10.16



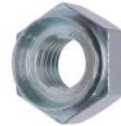
Gauge Thickness to 'mm'

Conversion Table

Imperial Gauge Size (SWG)	Imperial Gauge Thickness (mm)	Metric Sheet (mm)
4	5.893	6.0
6	4.877	5.0
8	4.064	4.0
10	3.251	3.0
12	2.642	2.5
14	2.032	2.0
16	1.626	1.5
18	1.219	1.2
20	0.914	1.0
22	0.711	0.8
24	0.559	0.6

HEXAGON Pattern

Thread Size	Hole Diameter (mm)	Spigot Diameter (max)	Body Across Flats (mm)	Body Height (mm)
M3	5.54	5.54	7.92	3.17
M4	6.73	6.73	7.92	3.17
M5	7.92	7.92	9.52	3.81
M6	9.52	9.52	11.1	5.08
M8	12.7	12.7	14.27	6.35
M10	15.87	15.87	19.05	7.62
M12	19.05	19.05	22.22	10.16



MINI Pattern

Thread Size	Hole Diameter (mm)	Spigot Diameter (max)	Body Diameter (mm)	Body Height (mm)
M2	3.5	3.5	5	2.3
M2.5	4.19	4.19	5.5	2.8
M3	4.19	4.19	5.5	2.8
M4	5.41	5.41	7	3.2
M5	6.4	6.4	8.5	3.8
M6	7.7	7.7	10	5.1



Rivet Bush **STANDOFFS** have the same Hole & Body Diameter as either the Round or Mini Pattern.

TANK Bushes have the same Hole & Body Diameter as the **Round** Pattern.

Bushes with special dims made to order.
E & OE

**NORMANDY
FASTENERS**

Tel + 44 (0) 1462 730215